

# AUTOMOTIVE ELECTRONICS



Ultrasonic  
Parking Transducer



Ultrasonic  
Assembled Sensor



Ultrasonic Parking  
Assist Sensor



AK2 Ultrasonic  
Sensor



Ultrasonic  
Transducer for CPD



Life Detection  
Module



Life Detection  
Module



Haptic Feedback  
Actuator



Ultrasonic AdBlue  
Quality Sensor



DEF/AdBlue  
Level Sensor



Forward Collision  
Warning Sensor



Door Hidden  
Ultrasonic Sensor



Ultrasonic  
Lens Cleaning



Automotive  
Fragrance Solution



CO<sub>2</sub> Sensor



Buzzer



# AUTOMOTIVE ELECTRONICS

03	Ultrasonic Parking Transducer
04	Ultrasonic Assembled Sensor
05	Ultrasonic Parking Assist Sensor
06	AK2 Ultrasonic Sensor
07	Ultrasonic Transducer for CPD
08	MEMS Ultrasonic Transducer for CPD
09	Life Detection Module
10	Haptic Feedback Actuator
11	Ultrasonic DEF/AdBlue Quality Sensor
12	DEF/AdBlue Level Sensor
13	Ultrasonic Forward Collision Warning Sensor
14	Door Hidden Ultrasonic Sensor
15	Ultrasonic Lens Cleaning
16	Automotive Fragrance Solution
17	CO2 Sensor
18	Buzzer
19	Lineup

Ultrasonic Parking Transducer

Features

- Quality control standard of Automotive OEM manufacturers
- Outstanding consistency and stability
- High sensitivity and low power consumption

Applications

- Reverse parking system
- Parking assist system



Ultrasonic Assembled Sensor





Features

- Integrated design, easy to install
- High sensitivity

Applications

- Parking Distance Control(PDC)
- Reversing aid system



Model	TC0120-001	TC0121-002	TC0062-003	TC0223-000
Appearance				
Resonant frequency (KHz)	48	55.5	58	55.5
Direction angle (°)	X: 60 Y: 60	X: 90 Y: 45	X: 90 Y: 45	X: 90 Y: 45
Decay time (ms)	≤1.8	≤2.2	≤1.8	≤2.0
Size (mm)	Φ15.5 x H9.0	Φ15.5 x H9.0	Φ14.0 x H9.0	Φ15.5 x H9.0

Model	TK0152	TK0158	TK0170
Appearance			
Frequency (KHz)	55.5±1	55.5±1	55.5±1
Direction angle (°)	X: 85 Y: 45	X: 90 Y: 45	X: 100 Y: 50
Decay time (ms)	0.9~1.5	≤1.50	1.0~1.45
Detection range* (mm)	≥2.5	≥2.5	≥2.5

\* 75mm tube measurement



## Ultrasonic Parking Assist Sensor

### Features

- Long detection range, up to 5m
- Built-in circuit which matches the self-developed transducer
- IP69 protection class, superior weather resistance, stability and anti-interference

### Applications

- Parking assist system



## AK2 Ultrasonic Sensor





### Features

- Long and short range (APA & UPA) fusion
- Codable modulation to reduce interference
- DSI3 interface for fast signal propagation
- Functional safety (ASIL B) level

### Applications

- Auto Parking Assist (APA)
- Automated Valet Parking (AVP)



Model	VU0001-001	VU0002-001	VU0004-001	VU0005-000
Appearance				
Frequency (Khz)	48	55.5	55.5	48
Directivity ( °)	X: 60 Y: 60	X: 90 Y: 45	X: 90 Y: 45	X: 60 Y: 60
Max.range* (mm)	5000	2500	2500	5000
Accuracy (cm)	≤ ±5	≤ ±5	≤ ±5	≤ ±5
Communication Protocol	LIN 2.2	LIN 2.2	I/O	I/O
Protection class	IP69	IP69	IP69	IP69

\*Φ75mm tube measurement

Model	VU0012
Appearance	
Frequency (Khz)	55.5
Directivity ( °)	X: 120 Y: 60
Max.range* (mm)	150~5500
Accuracy (cm)	±3
Communication Protocol	DSI3
Protection class	IP69

\*Φ75mm tube measurement



Ultrasonic Transducer for CPD

Features

- Quality control standard of Automotive OEM manufacturers
- Outstanding consistency and stability
- High sensitivity and low power consumption

Applications

- Rear occupant alert system



Model	TO0101-004&TO0104-004	TO0019-000&TO0020-000
Appearance		
Frequency (Khz)	40±1.0	40±1.0
S.P.L (dB)	117~122	≥115
Sensitivity (dB)	-60~-55	≥65
Operating TEMP. (°C)	-40~+90	-40~+90
Housing material	ABS	ABS
Size (mm)	Φ10.0 X 7.1	Φ16.0 X 12.0

MEMS Ultrasonic Sensor for CPD

Features

- High sensitivity, quickly detect breathing or small movements
- Not affected by light, temperature and humidity
- Low power consumption

Applications

- Rear occupant alert system



Model	AW101
Frequency (Khz)	50±2.5
Size (mm)	4.5x4.5x2
Detection range (cm)	20~150
Field of View (°)	180
Protection class	IP67



### Life Detection Module

- Features**
- Compact size, with a mounting hole of only 2.2mm
  - Vital signs detection is possible
  - Low cost of ownership

- Applications**
- Child presence detection (CPD)
  - Rear Occupant Alert (ROA)



Model	AW103
Detection range (cm)	20~150
Field of view (°)	±60
Communication Protocol	CAN
Operating voltage (V)	12
Size (mm)	28x24x1.2

### Haptic Feedback Actuator

- Features**
- High sensitivity and stable performance
  - Low power consumption
  - Better dust / water proof

- Applications**
- Display touch panel
  - Car central control screen



Model	HM0873	HM0003	HM0007	HM0011-000	HM0011-001
Appearance					
Operating voltage (V)	-100 ~ +200 (15ms max)	-30 ~ +100 (15ms max)	-30 ~ +100 (15ms max)	+15~ +55 (15ms max)	+15~ +55 (15ms max)
Layer(s) of ceramic	Single Layer	Multi-Layer (7 Layers)	Multi-Layer (3 Layers)	Multi-Layer (12 Layers)	Multi-Layer (12 Layers)
Capacitance (nF)	6±20%	400±20%	150±20%	180±20%	240±20%
Size (mm)	Φ15x0.25	Φ21x1.55	Φ24x0.46	9x4x1.41	12x4x1.65



Ultrasonic DEF/AdBlue Quality Sensor



- Features
- High reliability
  - High accuracy
- Applications
- SCR system for Diesel Engines




DEF/AdBlue Level Sensor

- Features
- Continuous measurement
  - High accuracy ( Four times as high as the traditional liquid level sensors )
  - No moving part
- Applications
- SCR system for Diesel Engines



Model	UQ0002	UQ0003
Appearance		
Frequency (KHz)	700±100	840±30
Capacitance (pF)	860±22%	750±20%
Protection class	ip67	IP67
Clutter to active signal ratio	1:4	/

Model	UM0059-000
Appearance	
Measurement range (mm)	40~500
Accuracy (mm)	±5
Response time (s)	≤2
Power (V)	12



Ultrasonic Forward Collision Warning Sensor

- Features
- Long detection range, up to 5m
  - Built-in circuit which matches the self-developed transducer
  - IP69 Protection class

- Applications
- Forward Collision Warning



Model	VU0001-001	VU0005-000
Appearance		
Frequency (Khz)	48	48
Directivity ( °)	X: 60 Y: 60	X: 60 Y: 60
Max.range* (mm)	5000	5000
Accuracy (cm)	≤ ±5	≤ ±5
Communication Protocol	LIN 2.2	I/O
Protection class	IP69	IP69

\*Φ75mm tube measurement

Door Hidden Ultrasonic Sensor

- Features
- Self-developed matching layer, using ultrasonic penetration technology
  - Concealed assembly to maintain beautiful body lines
  - Penetrating steel and aluminum materials for accurate detection

- Applications
- Automotive door sensing system



Model	VU0015
Frequency (Khz)	48
Detecting angle ( °)	X: 55 Y: 55
Detecting distance (mm)	1800
Accuracy (cm)	≤ ±5
Communication Protocol	LIN 2.2
Protection class	IP69



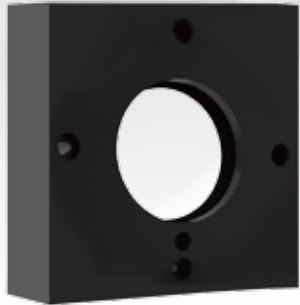
## Ultrasonic Lens Cleaning

### Features

- Small size, flexible development, wide range of applications
- Intelligent design can be matched to realize intelligent system control
- Applicable to a variety of scene cleaning, high cleaning efficiency

### Applications

- Camera Monitor System (CMS)



Model	UL0001
Applicable Camera Wide-Angle	87°、110°
Voltage <sub>(V)</sub>	12
Communication Protocol	IIC、UART
Frequency <sub>(Khz)</sub>	40~3500
Melting Ice Time <sub>(s)</sub>	≤10 (1.9 mm of ice thickness)
Dewatering time <sub>(s)</sub>	≤5 (110 ml water)
Current <sub>(A)</sub>	0.1~2

## Automotive Fragrance Solution

### Features

- Anhydrous fragrance expansion and direct atomization to avoid pollution and deterioration
- Integrated design, good sealing performance and no leakage of essential oil
- Adopt POM material, which is corrosion resistant, safe and environmentally friendly

### Applications

- Automotive Cockpit Management
- Automobile Car Scenting Systems



Model	UM0129-002
Voltage <sub>(V)</sub>	12
Frequency <sub>(Mhz)</sub>	3.0±0.15
Atomization accuracy <sub>(mg)</sub>	1
Communication method	LIN



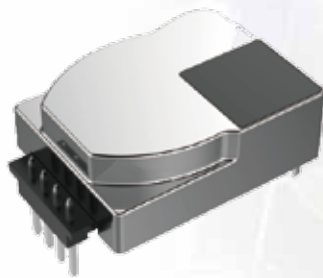
## CO<sub>2</sub> Sensor

### Features

- Excellent precision
- Good consistency

### Applications

- Automotive Environmental System



Model	GC0001
Appearance	
Effective range (ppm)	0~3000
Max. Range (ppm)	0~5000
Accuracy (ppm)	± 50+5%
Input voltage (V)	(DC)+4.7 to +5.3
Current consumption (mA)	≤150
Size (mm)	33x20x9.2

## Buzzer

### Features

- High reliability
- Small size, easy to install

### Applications







- Car security system



Model	QJ0853	QJ0861	QJ0890	QJ0855
Appearance				
Frequency (Hz)	2000	3200	2000	800
S.P.L (dB)	≥100(10cm)	≥98(30cm)	≥80(100cm)	88(50cm)
Driving voltage	30Vp-p	12VDC	12Vp-p	12VDC
Size (mm)	Φ30×13.5	Φ42×16.5	38.5×30×27.6	Φ43.2×16.8



Lineup

Products	Appearance	Parking system	Parking assist system	BSD system	SCR system			FCW system	CPD system	Automotive Door Sensing System	Environmental system	Smart Screen	Camera Monitor System	Anti-theft alarm system
Ultrasonic Transducer		■	■	■										
Ultrasonic Sensor		■	■	■				■		■				
MEMS Ultrasonic Sensor									■					
DEF/AdBlue Quality Sensor					■									
DEF/AdBlue Level Sensor					■									
Open-type Ultrasonic Transducer									■					■
Haptic Feedback Actuator												■		
CO2 Sensor											■			
Ultrasonic Lens Cleaning													■	
Automotive Fragrance Solution											■			
Buzzer		■	■	■				■	■	■			■	■